

Coordination and Response

Question Paper 1

Level	IGCSE
Subject	Biology
Exam Board	CIE
Topic	Coordination and Response
Paper Type	(Extended) Theory Paper
Booklet	Question Paper 1

Time Allowed: 64 minutes

Score: /53

Percentage: /100

1 The nervous system coordinates the responses of animals to changes in their environment.

(a) Fig. 2.1 shows the arrangement of the nervous system in a mammal.

Complete Fig. 2.1 by writing the names of the missing parts of the mammalian nervous system in the boxes.

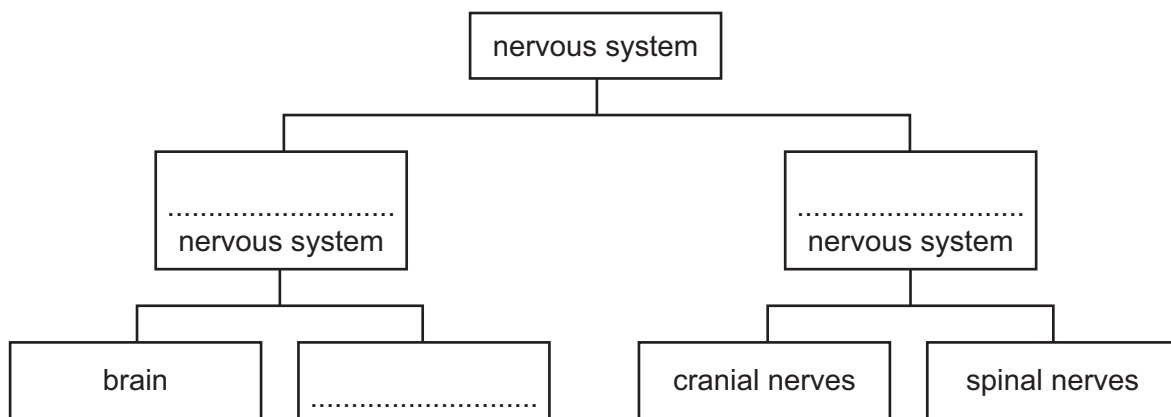


Fig. 2.1

[3]

(b) Fig. 2.2 is a flow chart that shows how an involuntary action is controlled.

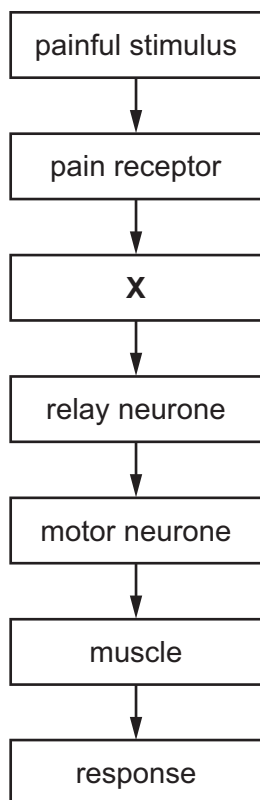


Fig. 2.2

(i) State the structure found at X.

..... [1]

(ii) State the type of involuntary action shown by the flow chart.

..... [1]

(iii) State **two** ways in which a voluntary action differs from an involuntary action.

1

.....

2

.....

[2]

(c) Fig. 2.3 shows three pots of seedlings that have been kept in different conditions.

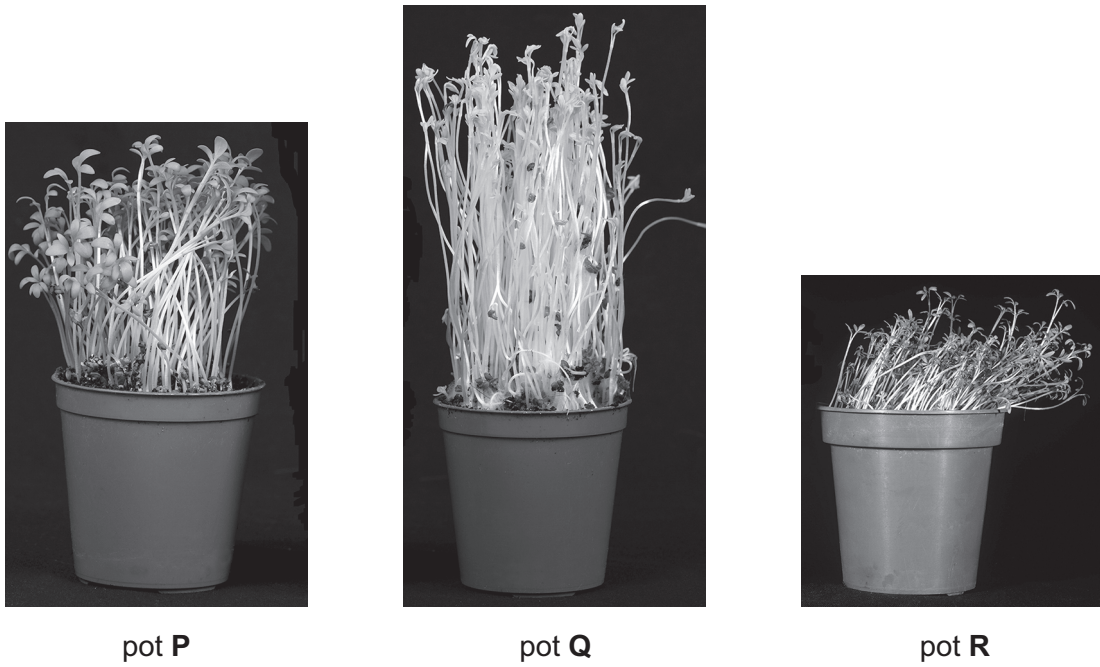


Fig. 2.3

(i) State the conditions in which pots **P** and **Q** were kept.

P

Q

[1]

(ii) State the name of the growth response shown by the seedlings in pot **R**.

.....

[2]

(iii) Explain the advantage to the seedlings of this growth response.

.....
.....
.....
.....
.....

[2]

(iv) Auxins control the growth responses of seedlings.

Explain how auxins control the growth response of the seedlings in pot **R**.

.....
.....
.....
.....
.....
.....
.....
.....
.....
.....

[4]

[Total: 16]

2 Fig. 3.1 is a diagram of human skin in cold weather.

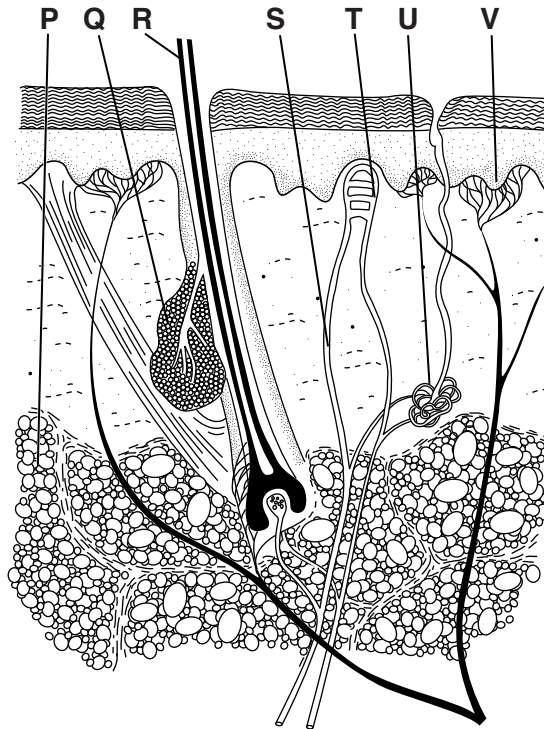


Fig. 3.1

(a) Table 3.1 shows the responses of the skin to cold weather.

Complete the table by:

- naming the parts of the skin that respond to cold weather
- using the letters (P to V) from Fig. 3.1 to identify these parts of the skin.

Table 3.1

responses of skin to cold weather	name of part	letter from Fig. 3.1
stands upright to trap air		
constricts to reduce blood flow to skin		
stops producing sweat		

3 Fig. 2.1 shows a diagram of the liver and the blood vessels that enter and exit from it.

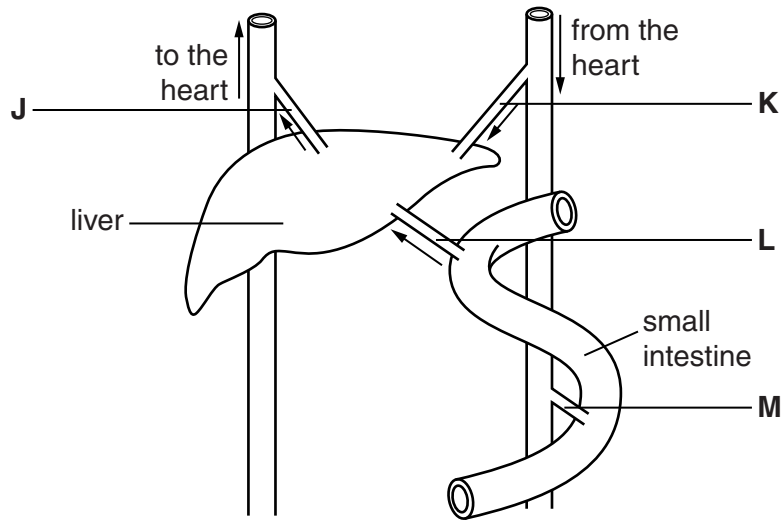


Fig. 2.1

(a) Name blood vessel L.

.....[1]

(b) Blood vessel J is a vein.

State **two** structural features of veins and explain how each feature is related to its function of returning blood to the heart.

feature

explanation

.....

feature

explanation

.....[4]

- (c) Blood samples were taken from each of the blood vessels **J**, **K**, **L** and **M** two hours after a meal of rice. Table 2.1 shows the concentration of glucose in these blood samples.

Table 2.1

blood vessel	blood glucose concentration /mg per 100 cm ³
J	135
K	128
L	181
M	133

Calculate the percentage increase in blood glucose concentration between blood vessel **J** compared with **L**. Express your answer to the nearest whole number.

Show your working.

..... %
[2]

- (d) Control of blood glucose by the liver is an example of homeostasis.

- (i) Explain how the liver lowers blood glucose concentration when it is too high.

.....
.....
.....
.....
.....[2]

- (ii) Name **one other** factor in the human body that is also controlled by homeostasis.

.....
.....[1]

4 Fig. 3.1 is a diagram that shows the control of blood glucose concentration.

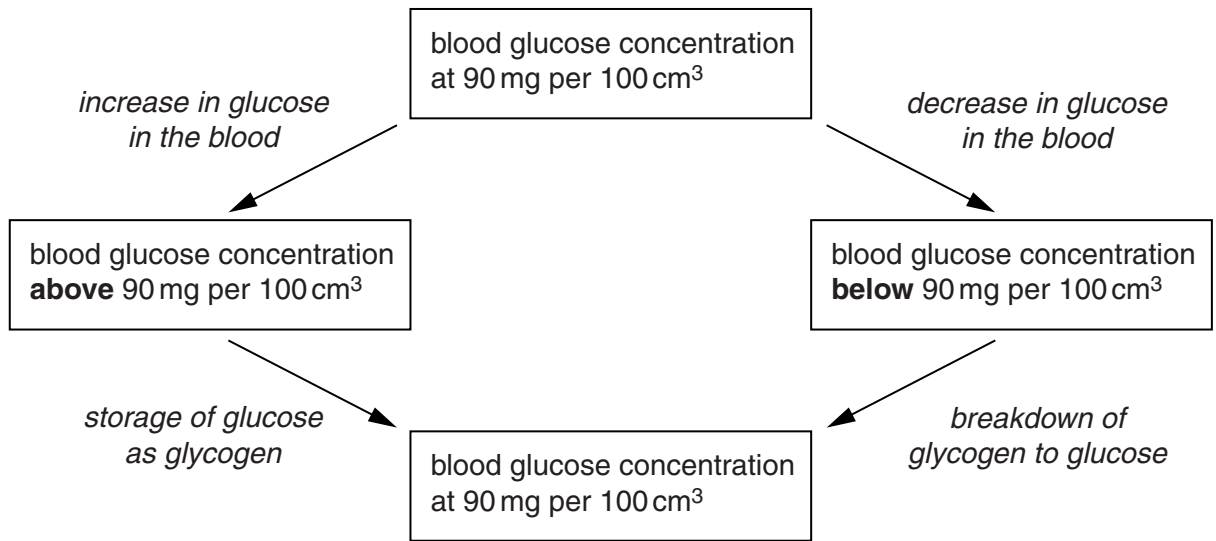


Fig. 3.1

(a) (i) State **one** reason why the concentration of glucose in the blood **increases**.

.....
.....[1]

(ii) State **one** reason why the concentration of glucose in the blood **decreases**.

.....
.....[1]

(iii) Name **two** places in the body where glycogen is stored.

1

2

[2]

(b) Explain how an increase in glucose concentration is controlled in the body.

.....
.....
.....
.....
.....
.....
.....[3]

