

BLANK PAGE



5.

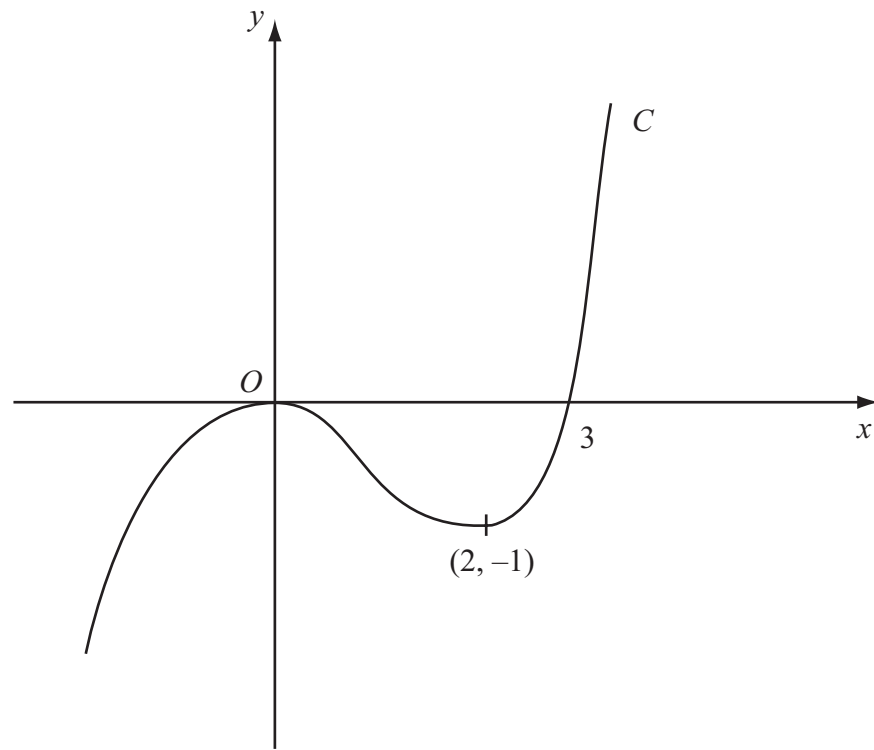


Figure 1

Figure 1 shows a sketch of the curve C with equation $y = f(x)$. There is a maximum at $(0, 0)$, a minimum at $(2, -1)$ and C passes through $(3, 0)$.

On separate diagrams sketch the curve with equation

(a) $y = f(x + 3)$, **(3)**

(b) $y = f(-x)$. **(3)**

On each diagram show clearly the coordinates of the maximum point, the minimum point and any points of intersection with the x -axis.



Question 5 continued

Leave
blank

(Total 6 marks)

Q5

9

Turn over



Question 7 continued

Lined area for writing the answer to Question 7.

Leave blank

Q7

(Total 7 marks)



N 3 0 0 8 1 A 0 1 3 2 8

8. The point $P(1, a)$ lies on the curve with equation $y = (x + 1)^2(2 - x)$.

(a) Find the value of a . (1)

(b) On the axes below sketch the curves with the following equations:

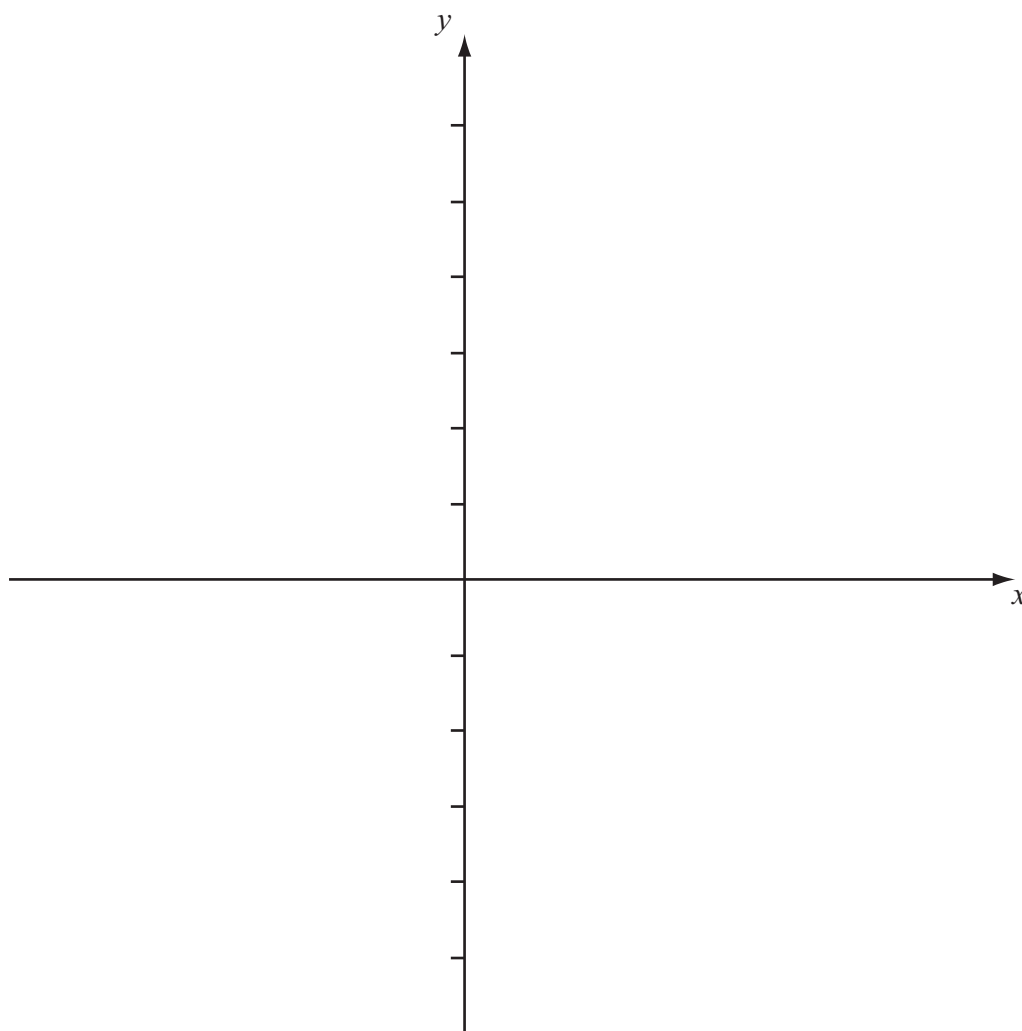
(i) $y = (x + 1)^2(2 - x)$,

(ii) $y = \frac{2}{x}$.

On your diagram show clearly the coordinates of any points at which the curves meet the axes. (5)

(c) With reference to your diagram in part (b) state the number of real solutions to the equation

$$(x + 1)^2(2 - x) = \frac{2}{x}. \quad (1)$$





Question 9 continued

Leave
blank

Lined area for writing the answer to Question 9.

(Total 11 marks)

Q9

Marking box for Question 9, consisting of two adjacent empty boxes.



N 3 0 0 8 1 A 0 1 9 2 8

Leave
blank

10. The line l_1 passes through the point $A(2, 5)$ and has gradient $-\frac{1}{2}$.

(a) Find an equation of l_1 , giving your answer in the form $y = mx + c$. (3)

The point B has coordinates $(-2, 7)$.

(b) Show that B lies on l_1 . (1)

(c) Find the length of AB , giving your answer in the form $k\sqrt{5}$, where k is an integer. (3)

The point C lies on l_1 and has x -coordinate equal to p .

The length of AC is 5 units.

(d) Show that p satisfies $p^2 - 4p - 16 = 0$. (4)



Leave
blank

Question 10 continued

Lined area for writing the answer to Question 10.

Q10

(Total 11 marks)



BLANK PAGE

