

Please check the examination details below before entering your candidate information

| | |
|-------------------|-------------|
| Candidate surname | Other names |
|-------------------|-------------|

Pearson Edexcel
International
Advanced Level

Centre Number

| | | | | |
|--|--|--|--|--|
| | | | | |
|--|--|--|--|--|

Candidate Number

| | | | |
|--|--|--|--|
| | | | |
|--|--|--|--|

Tuesday 8 January 2019

Morning (Time: 2 hours 30 minutes)

Paper Reference **WMA01/01**

Core Mathematics C12
Advanced Subsidiary

You must have:

Mathematical Formulae and Statistical Tables (Blue)

Total Marks

| |
|--|
| |
|--|

Candidates may use any calculator allowed by the regulations of the Joint Council for Qualifications. Calculators must not have the facility for symbolic algebra manipulation, differentiation and integration, or have retrievable mathematical formulae stored in them.

Instructions

- Use **black** ink or ball-point pen.
- If pencil is used for diagrams/sketches/graphs it must be dark (HB or B). Coloured pencils and highlighter pens must not be used.
- **Fill in the boxes** at the top of this page with your name, centre number and candidate number.
- Answer **all** questions and ensure that your answers to parts of questions are clearly labelled.
- Answer the questions in the spaces provided – *there may be more space than you need.*
- You should show sufficient working to make your methods clear. Answers without working may not gain full credit.
- When a calculator is used, the answer should be given to an appropriate degree of accuracy.

Information

- The total mark for this paper is 125.
- The marks for **each** question are shown in brackets – *use this as a guide as to how much time to spend on each question.*

Advice

- Read each question carefully before you start to answer it.
- Try to answer every question.
- Check your answers if you have time at the end.

Turn over ►

P54944A

©2019 Pearson Education Ltd.

1/1/1/



Pearson

Leave
blank

Question 1 continued

DO NOT WRITE IN THIS AREA

DO NOT WRITE IN THIS AREA

DO NOT WRITE IN THIS AREA

Q1

(Total 3 marks)



2. Given $y = 2^x$, express each of the following in terms of y . Write each expression in its simplest form.

(a) 2^{2x} (1)

(b) 2^{x+3} (1)

(c) $\frac{1}{4^{2x-3}}$ (2)

DO NOT WRITE IN THIS AREA

DO NOT WRITE IN THIS AREA

DO NOT WRITE IN THIS AREA



Leave
blank

Question 2 continued

DO NOT WRITE IN THIS AREA

Handwriting practice area consisting of approximately 35 horizontal lines for writing the answer to Question 2.

(Total 4 marks)

Q2



3. A curve has equation

$$y = \sqrt{2}x^2 - 6\sqrt{x} + 4\sqrt{2}, \quad x > 0$$

Find the gradient of the curve at the point $P(2, 2\sqrt{2})$.

Write your answer in the form $a\sqrt{2}$, where a is a constant.

(Solutions based entirely on graphical or numerical methods are not acceptable.)

(4)

DO NOT WRITE IN THIS AREA

DO NOT WRITE IN THIS AREA

DO NOT WRITE IN THIS AREA



4. A sequence is defined by

$$u_1 = k, \text{ where } k \text{ is a constant}$$

$$u_{n+1} = 4u_n - 3, \quad n \geq 1$$

(a) Find u_2 and u_3 in terms of k , simplifying your answers as appropriate.

(3)

Given $\sum_{n=1}^3 u_n = 18$

(b) find k .

(3)

DO NOT WRITE IN THIS AREA

DO NOT WRITE IN THIS AREA

DO NOT WRITE IN THIS AREA



Question 4 continued

DO NOT WRITE IN THIS AREA

DO NOT WRITE IN THIS AREA

DO NOT WRITE IN THIS AREA

Lined writing area with 30 horizontal lines.

Q4

(Total 6 marks)



P 5 4 9 4 4 A 0 9 4 8

6. (a) Sketch the graph of $y = 1 + \cos x$, $0 \leq x \leq 2\pi$

Show on your sketch the coordinates of the points where your graph meets the coordinate axes.

(3)

- (b) Use the trapezium rule, with 6 strips of equal width, to find an approximate value for

$$\int_0^{2\pi} (1 + \cos x) dx$$

(4)

DO NOT WRITE IN THIS AREA

DO NOT WRITE IN THIS AREA

DO NOT WRITE IN THIS AREA



7. The equation $2x^2 + 5px + p = 0$, where p is a constant, has no real roots.

Find the set of possible values for p .

(5)

DO NOT WRITE IN THIS AREA

DO NOT WRITE IN THIS AREA

DO NOT WRITE IN THIS AREA



Question 7 continued

Lined writing area for the answer to Question 7.

(Total 5 marks)

Q7

DO NOT WRITE IN THIS AREA

DO NOT WRITE IN THIS AREA

DO NOT WRITE IN THIS AREA



8. Given $k > 3$ and

$$\int_3^k \left(2x + \frac{6}{x^2} \right) dx = 10k$$

show that $k^3 - 10k^2 - 7k - 6 = 0$

(5)

DO NOT WRITE IN THIS AREA

DO NOT WRITE IN THIS AREA

DO NOT WRITE IN THIS AREA



9. The circle C has equation

$$x^2 + y^2 + 10x - 6y + 9 = 0$$

(a) Find the coordinates of the centre of C .

(2)

(b) Find the radius of C .

(2)

The point $P(-2, 7)$ lies on C .

(c) Find an equation of the tangent to C at the point P .

Write your answer in the form $ax + by + c = 0$, where a , b and c are integers.

(4)

DO NOT WRITE IN THIS AREA

DO NOT WRITE IN THIS AREA

DO NOT WRITE IN THIS AREA



Leave blank

Question 9 continued

Lined area for writing answers, consisting of approximately 28 horizontal lines.

DO NOT WRITE IN THIS AREA

DO NOT WRITE IN THIS AREA

DO NOT WRITE IN THIS AREA

(Total 8 marks)

Q9



P 5 4 9 4 4 A 0 1 9 4 8

10.

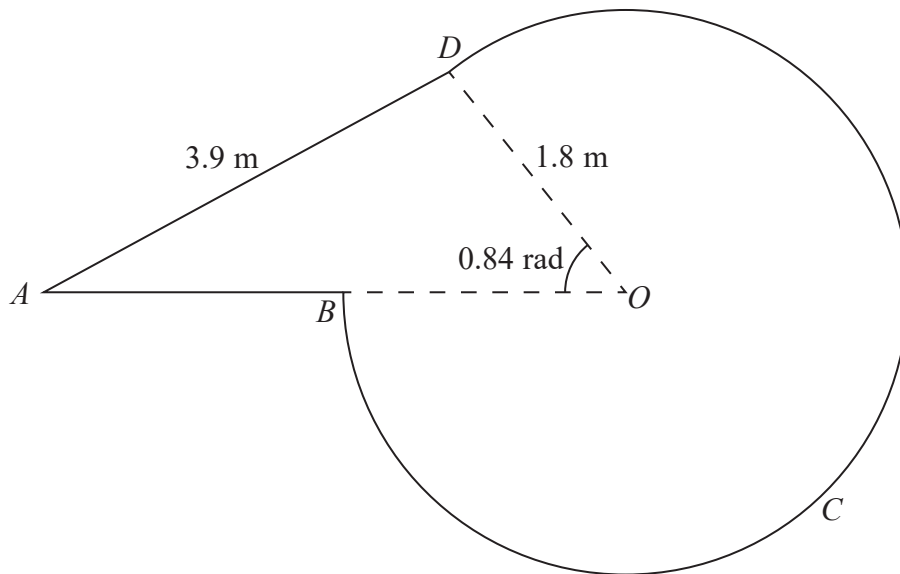
Diagram not
drawn to scale

Figure 1

Figure 1 shows the design for a shop sign $ABCD$.

The sign consists of a triangle AOD joined to a sector of a circle $DOBCD$ with radius 1.8 m and centre O .

The points A , B and O lie on a straight line.

Given that $AD = 3.9$ m and angle BOD is 0.84 radians,

- (a) calculate the size of angle DAO , giving your answer in radians to 3 decimal places. (2)
- (b) Show that, to one decimal place, the length of AO is 4.9 m. (3)
- (c) Find, in m^2 , the area of the shop sign, giving your answer to one decimal place. (3)
- (d) Find, in m, the perimeter of the shop sign, giving your answer to one decimal place. (3)

DO NOT WRITE IN THIS AREA

DO NOT WRITE IN THIS AREA

DO NOT WRITE IN THIS AREA



Question 11 continued

Lined area for writing the answer to Question 11.

DO NOT WRITE IN THIS AREA

DO NOT WRITE IN THIS AREA

DO NOT WRITE IN THIS AREA

Q11

(Total 8 marks)



12. Karen is going to raise money for a charity.

She aims to cycle a **total** distance of 1000 km over a number of days.

On day one she cycles 25 km.

She increases the distance that she cycles each day by 10% of the distance cycled on the previous day, until she reaches the total distance of 1000 km.

She reaches the **total** distance of 1000 km on day N , where N is a positive integer.

(a) Find the value of N . (4)

On day one, 50 people donated money to the charity. Each day, 20 more people donated to the charity than did so on the previous day, so that 70 people donated money on day two, 90 people donated money on day three, and so on.

(b) Find the number of people who donated to the charity on day fifteen. (2)

Each day, the donation given by each person was £5

(c) Find the total amount of money donated by the end of day fifteen. (3)

DO NOT WRITE IN THIS AREA

DO NOT WRITE IN THIS AREA

DO NOT WRITE IN THIS AREA



Question 12 continued

DO NOT WRITE IN THIS AREA

DO NOT WRITE IN THIS AREA

DO NOT WRITE IN THIS AREA

Lined area for writing the answer to Question 12.



13. $f(x) = 3x^3 + 3x^2 + cx + 12$, where c is a constant

Given that $(x + 3)$ is a factor of $f(x)$,

(a) show that $c = -14$ (2)

(b) Write $f(x)$ in the form $f(x) = (x + 3)Q(x)$ where $Q(x)$ is a quadratic function. (2)

(c) Use the answer to part (b) to prove that the equation $f(x) = 0$ has only one real solution. (2)

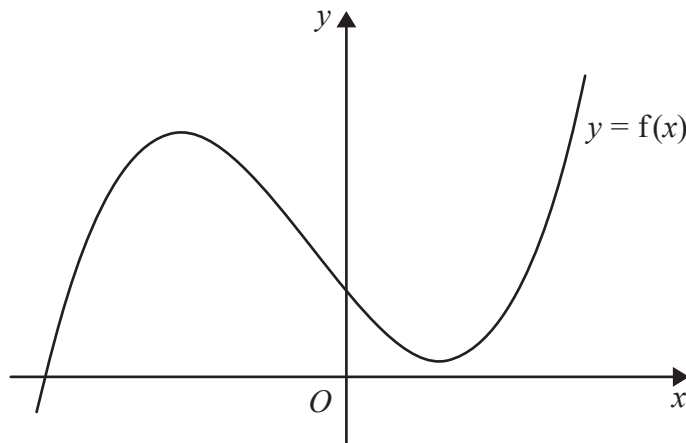


Figure 2

Figure 2 shows a sketch of the curve with equation $y = f(x)$, $x \in \mathbb{R}$.

On **separate** diagrams sketch the curve with equation

(d) (i) $y = f(3x)$

(ii) $y = -f(x)$

On each diagram show clearly the coordinates of the points where the curve crosses the coordinate axes. (4)

DO NOT WRITE IN THIS AREA

DO NOT WRITE IN THIS AREA

DO NOT WRITE IN THIS AREA



Leave
blank

Question 13 continued

DO NOT WRITE IN THIS AREA

DO NOT WRITE IN THIS AREA

DO NOT WRITE IN THIS AREA



Leave
blank

Question 13 continued

DO NOT WRITE IN THIS AREA

DO NOT WRITE IN THIS AREA

DO NOT WRITE IN THIS AREA

Q13

(Total 10 marks)



Question 15 continued

DO NOT WRITE IN THIS AREA

DO NOT WRITE IN THIS AREA

DO NOT WRITE IN THIS AREA



16.

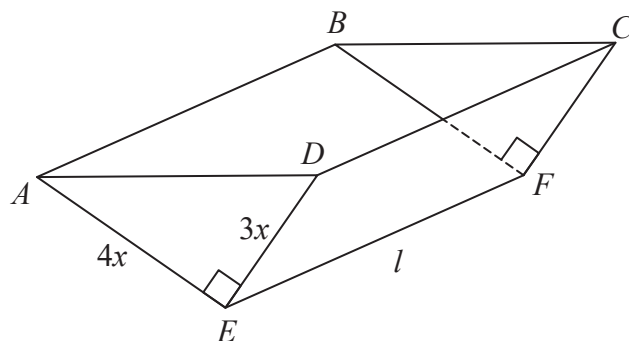


Figure 4

Figure 4 shows the design for a container in the shape of a hollow triangular prism.

The container is **open at the top**, which is labelled $ABCD$.

The sides of the container, $ABFE$ and $DCFE$, are rectangles.

The ends of the container, ADE and BCF , are congruent right-angled triangles, as shown in Figure 4.

The ends of the container are vertical and the edge EF is horizontal.

The edges AE , DE and EF have lengths $4x$ metres, $3x$ metres and l metres respectively.

Given that the container has a capacity of 0.75 m^3 and is made of material of negligible thickness,

(a) show that the internal surface area of the container, $S \text{ m}^2$, is given by

$$S = 12x^2 + \frac{7}{8x} \quad (5)$$

(b) Use calculus to find the value of x , for which S is a minimum.

Give your answer to 3 significant figures.

(5)

(c) Justify that the value of x found in part (b) gives a minimum value for S .

(2)

Using the value of x found in part (b), find to 2 decimal places,

(d) (i) the length of the edge AD ,

(ii) the length of the edge CD .

(4)

DO NOT WRITE IN THIS AREA

DO NOT WRITE IN THIS AREA

DO NOT WRITE IN THIS AREA



Leave
blank

Question 16 continued

(This area contains 30 horizontal lines for writing)

Q16

| | |
|--|--|
| | |
|--|--|

(Total 16 marks)

TOTAL FOR PAPER: 125 MARKS

END

DO NOT WRITE IN THIS AREA

DO NOT WRITE IN THIS AREA

DO NOT WRITE IN THIS AREA

