

3.

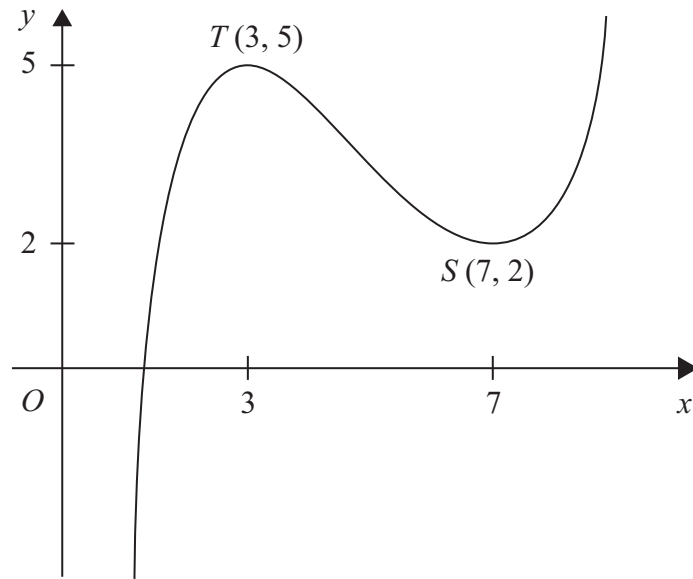


Figure 1

Figure 1 shows the graph of $y = f(x)$, $1 < x < 9$.
The points $T(3, 5)$ and $S(7, 2)$ are turning points on the graph.

Sketch, on separate diagrams, the graphs of

(a) $y = 2f(x) - 4$,

(3)

(b) $y = |f(x)|$.

(3)

Indicate on each diagram the coordinates of any turning points on your sketch.



Question 3 continued

Leave
blank

(Total 6 marks)

Q3

9

Turn over



BLANK PAGE

