



UNIVERSITY OF CAMBRIDGE INTERNATIONAL EXAMINATIONS
International General Certificate of Secondary Education

ART AND DESIGN

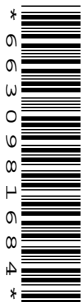
0400/03

Paper 3 Design Study

15 March – 30 April 2007

10 hours

**To be given to candidates on receipt by the Centre.
Candidates must have at least two weeks' preparation time.**



READ THESE INSTRUCTIONS FIRST

Write your Centre number, candidate number, name and question number on the top right-hand corner of the front of **each** sheet of paper.

Answer **one** question.

In addition to the examination piece candidates are required to submit **up to three** sheets of supporting work. These should be the sheets of preparatory work undertaken after receipt of this paper.

All questions are for designs on paper.

At the end of the examination, fasten all your work securely together at the top left-hand corner of each sheet.

All questions in this paper carry equal marks.

This document consists of **3** printed pages and **1** blank page.



1 Design using Lettering

Design a logo for a company which supplies computer software. The name of the company, **KLIKON**, must be included in your design. In addition show how the logo might look on the disc of a CD-ROM or in a small advertisement in a newspaper.

2 Illustration and Calligraphy

Either (a) Design the cover of a menu for an oriental restaurant named **THE MOON PALACE**.

Or (b) Using a calligraphic script with which you are familiar, write out the following poem and add a decorative border and/or an illustration.

The Waning Moon

And like a dying lady, lean and pale,
Who totters forth, wrapped in a gauzy veil,
Out of her chamber, led by the insane
And feeble wanderings of her fading brain,
The moon arose up in the murky East,
A white and shapeless mass.

Percy Bysshe Shelley

3 Fashion Design

Design the costume for a participant at a flower festival.

4 Fabric Design

Design a repeat pattern for shower curtains based on **one** of the following:

(a) Water sports

(b) Gymnastics

(c) Athletics

5 Photography

Images are required for a travel brochure based on **one** of the following themes:

- (a) Canopy **or** roofscape
- (b) Waiting **or** ready to go
- (c) Unusual viewpoint

You must process and print your own photographs

One main and two supporting photographs should be submitted. All three studies may be mounted on one side of thin card not exceeding A2 in size. Alternatively, they may be contained in a clear plastic cover. Contact prints of negatives showing other possible angles and views must be included as part of the accompanying preparatory work.

6 Printmaking

Make a print or series of prints for a greetings card based on **one** of the following themes:

- (a) Fossils **or** ferns
- (b) Towers **or** bridges
- (c) A domestic animal

7 Environmental/Structural Design

Design a sculpture garden to include the following features: a pond, a fountain, a bridge, pathways, seats and several sculptures. Show in an artist's impression how your design might look from the entrance gate.

8 Interior Design

Design a mosaic for the floor of the circular viewing area of the reptile house at a zoo.

BLANK PAGE

Permission to reproduce items where third-party owned material protected by copyright is included has been sought and cleared where possible. Every reasonable effort has been made by the publisher (UCLES) to trace copyright holders, but if any items requiring clearance have unwittingly been included, the publisher will be pleased to make amends at the earliest possible opportunity.

University of Cambridge International Examinations is part of the Cambridge Assessment Group. Cambridge Assessment is the brand name of University of Cambridge Local Examinations Syndicate (UCLES), which is itself a department of the University of Cambridge.